

APPENDIX F

PUYALLUP TRIBE ALL HAZARD MITIGATION PLAN

2017-2022 EDITION

HAZUS-MH EARTHQUAKE/FLOOD SCENARIO HAZARDS

OVERVIEW

This appendix contains the spatial results from the Hazus Earthquake Scenario results showing the Essential Facilities for 90% functionality for Day 1 and Day 7 following an earthquake event based on three earthquakes scenarios. Information was based on ShakeMaps developed by U.S. Geological Survey for a 7.1M earthquake occurring on the Tacoma Fault, 7.2M earthquake on the Nisqually Fault and a 7.2M earthquake on the SeaTac Fault. There was a total of four Essential Facilities that were modeled; fire stations, police stations, schools and hospitals. Additional information can be found in the Risk Assessment Section of the Pierce County All Hazard Mitigation Plan.

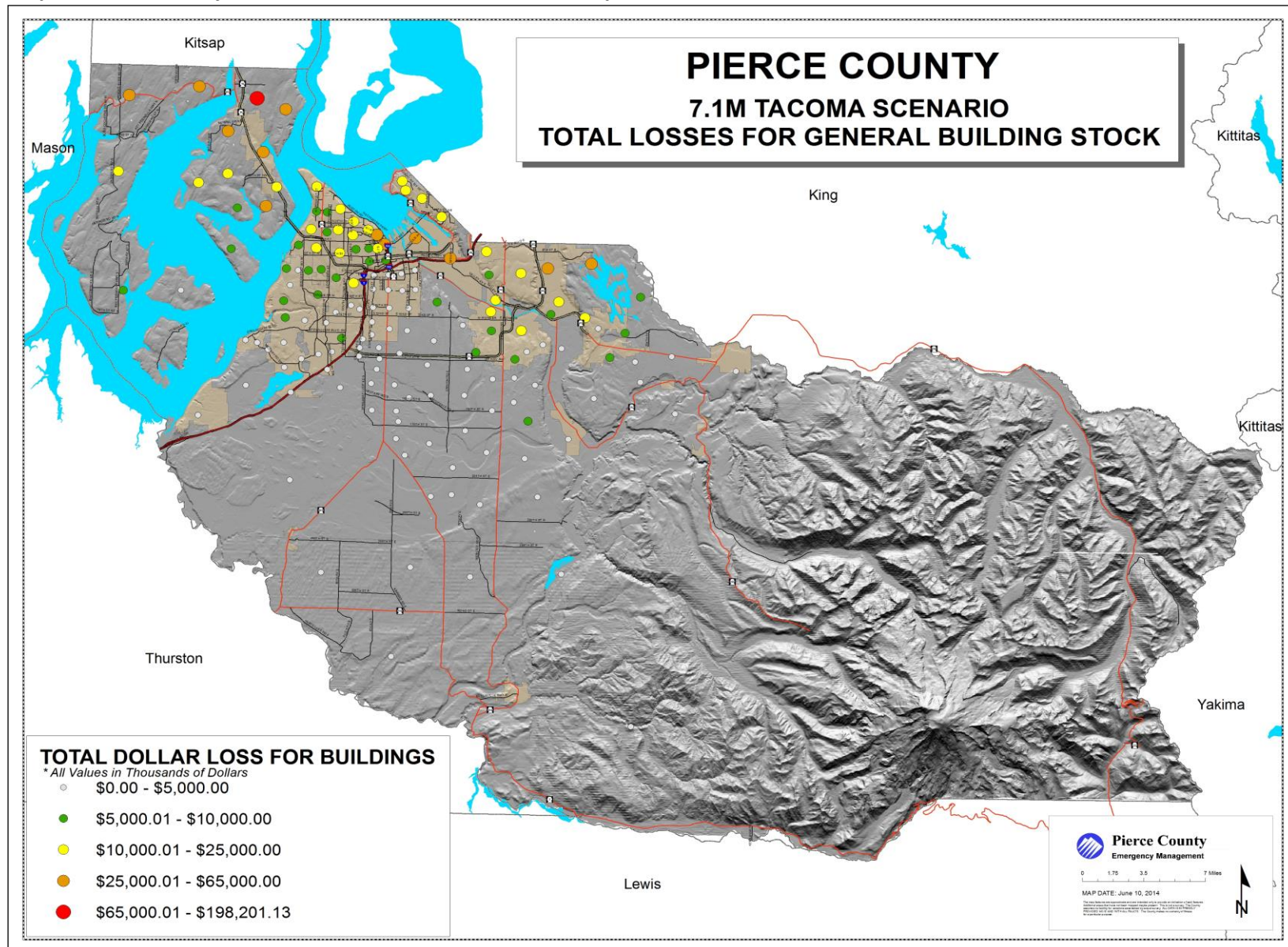
Inherent Errors

As a special note to the Gig Harbor and Key Peninsula areas St. Anthony's Hospital is not identified on Maps F-6, F-7, F-15, F-16, F-24 or F-25 due to the recent construction of St. Anthony's Hospital and lack of data. With future updates of the Region 5 All Hazard Mitigation Plan, St. Anthony's Hospital will be included in the scenario analysis. If this information becomes available prior to the five-year update in 2020, revised analysis will be done and the revised maps will be distributed to the City of Gig Harbor, Gig Harbor Fire & Medic One and the Key Peninsula Fire Department.

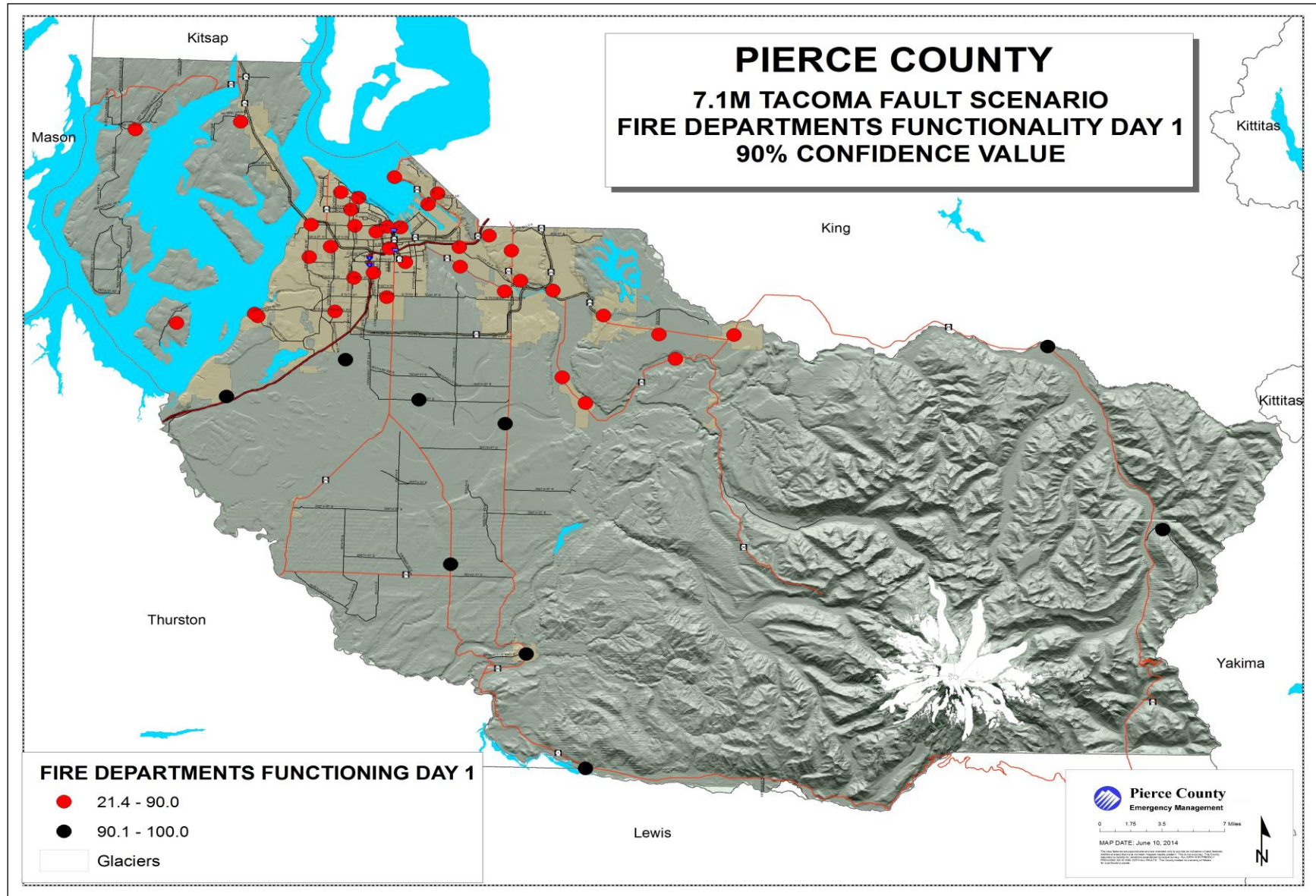
It has been identified that the police station located to the west side of Orting is not in the correct location as seen on Maps: F-4, F-5, F-13, F-14, F-22 and F-23. The police department shares a building with the Fire District #18 at 401 Washington Ave S, which is located in the middle of town. As Hazus-MH is updated the police station will show a co-location with the fire station at this same location. If this information becomes available prior to the five-year update in 2020, revised analysis will be done and the revised maps will be distributed to the City of Orting and to Pierce County Fire District #18.

(This page left blank intentionally)

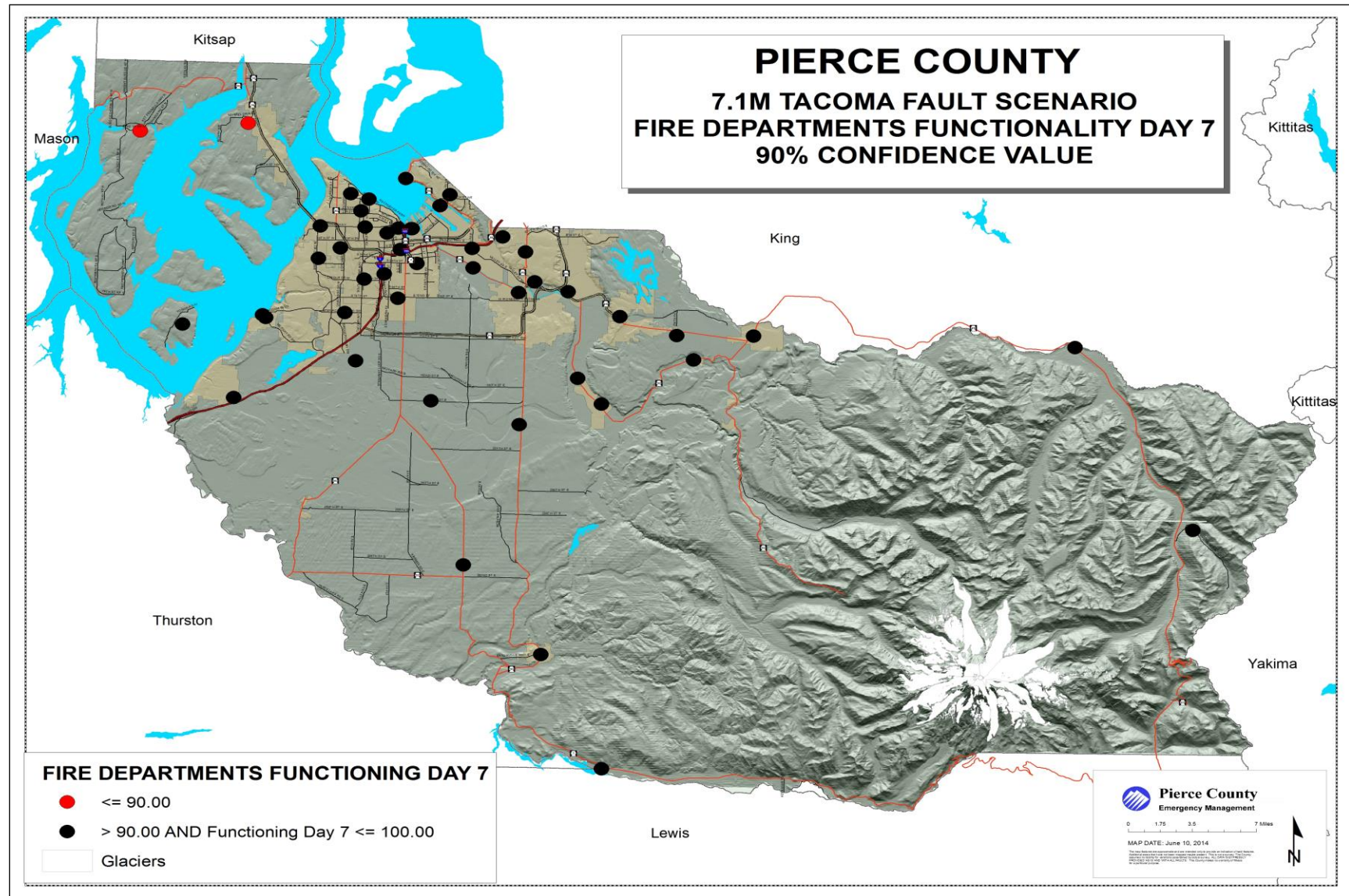
Map F-1 Pierce County Tacoma Fault Scenario Total Losses Map



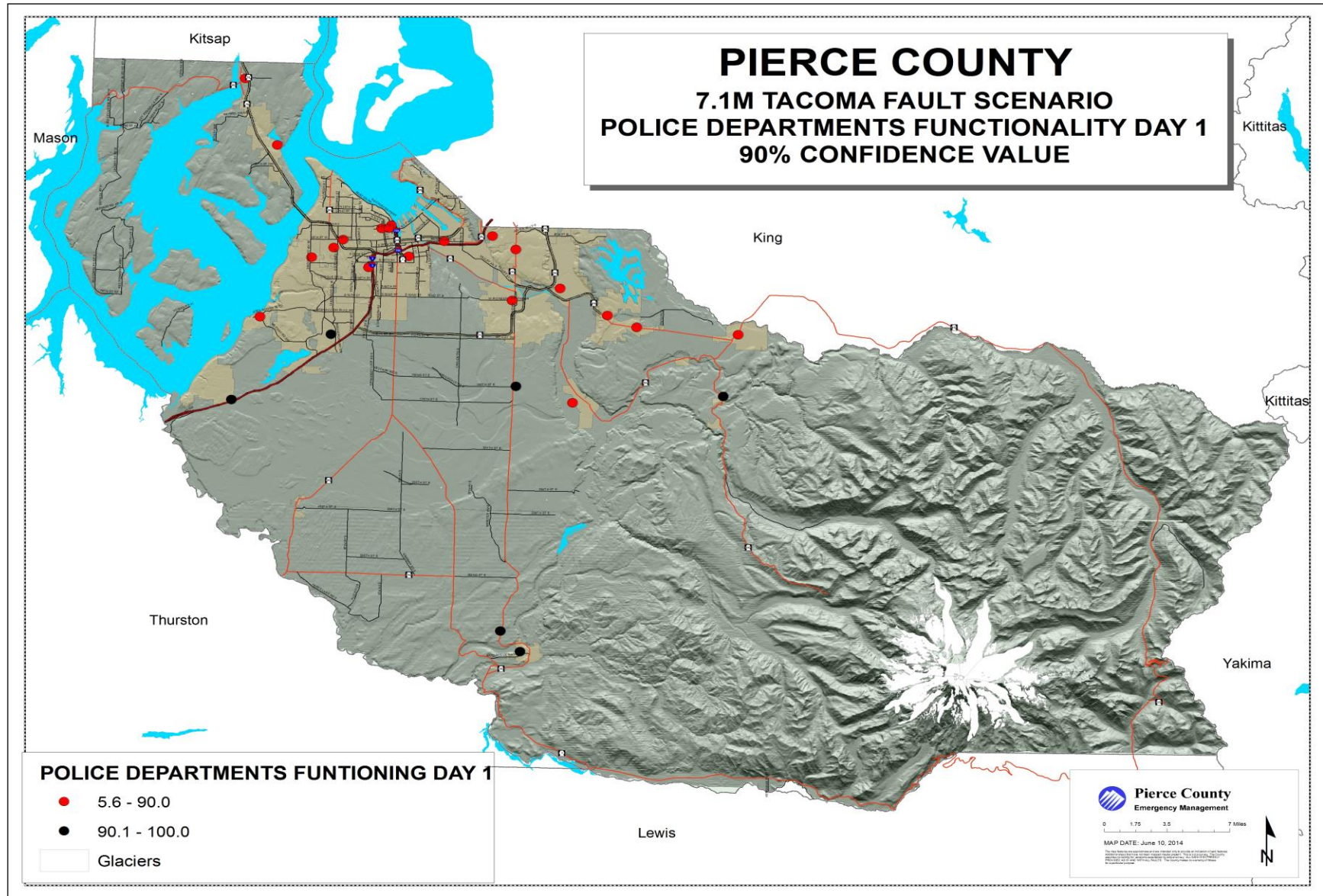
Map F-2 Pierce County Tacoma Fault Scenario Fire Department Functionality Day 1 Map



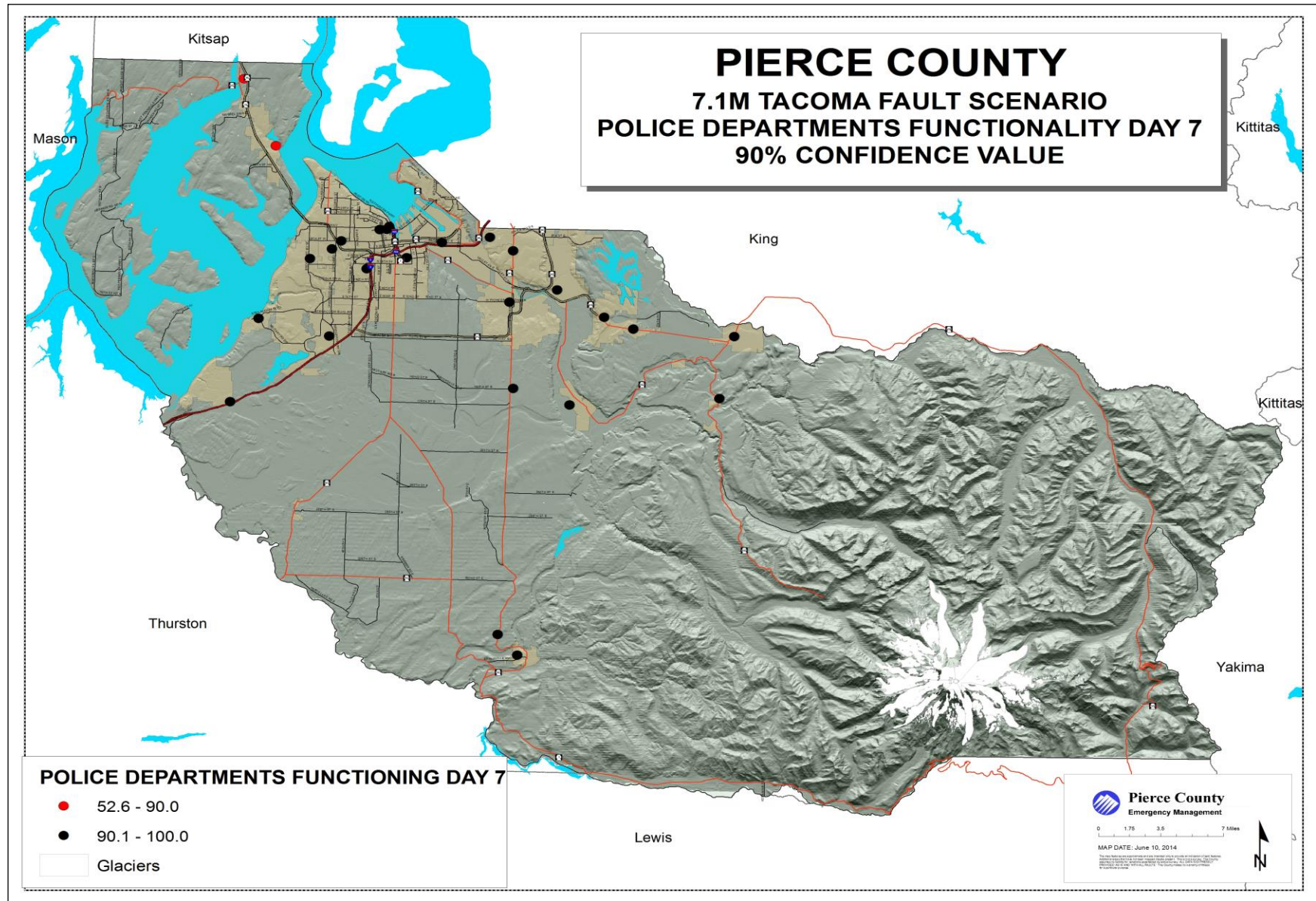
Map F-3 Pierce County Tacoma Fault Scenario Fire Department Functionality Day 7 Map



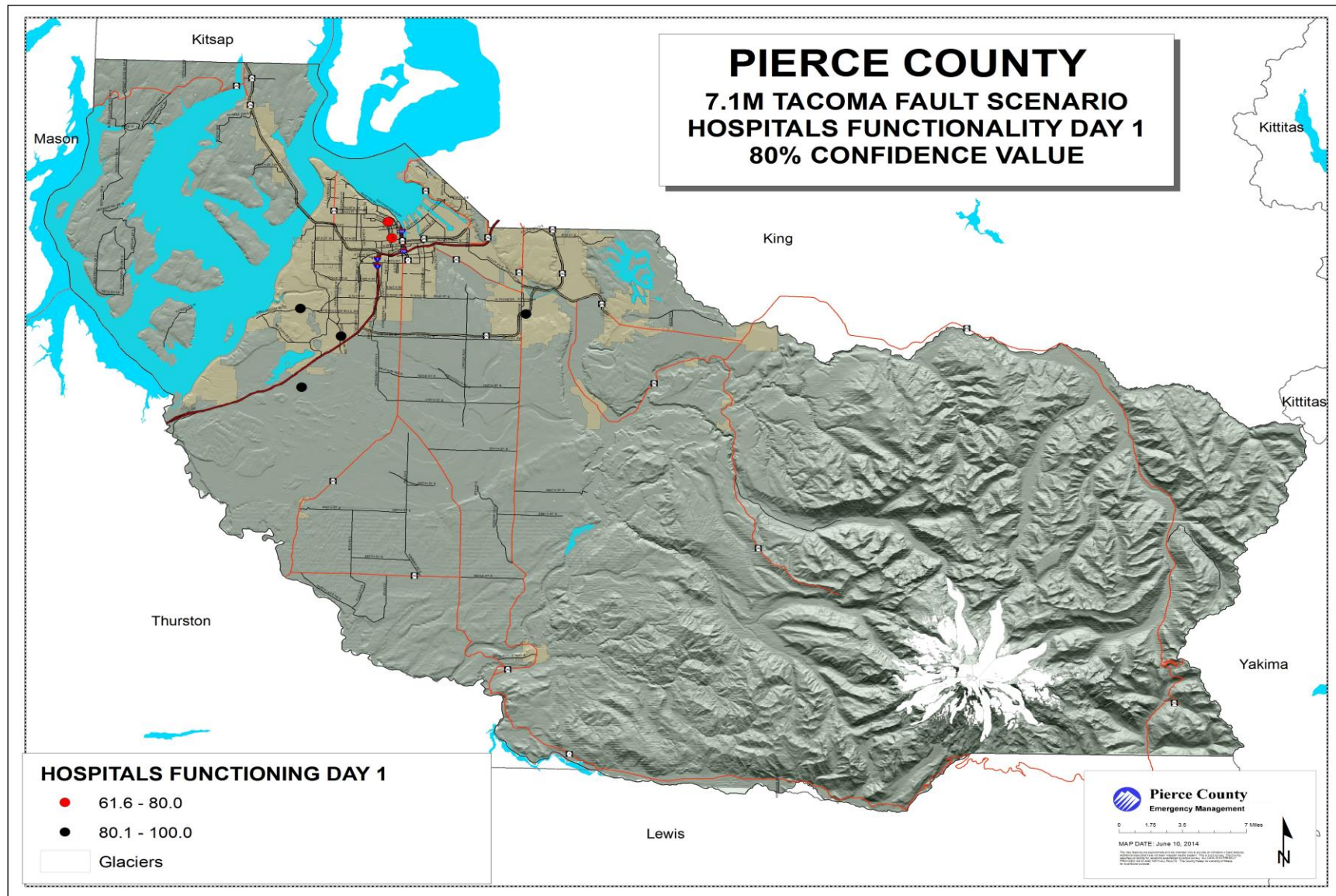
Map F-4 Pierce County Tacoma Fault Scenario Police Department Functionality Day 1¹



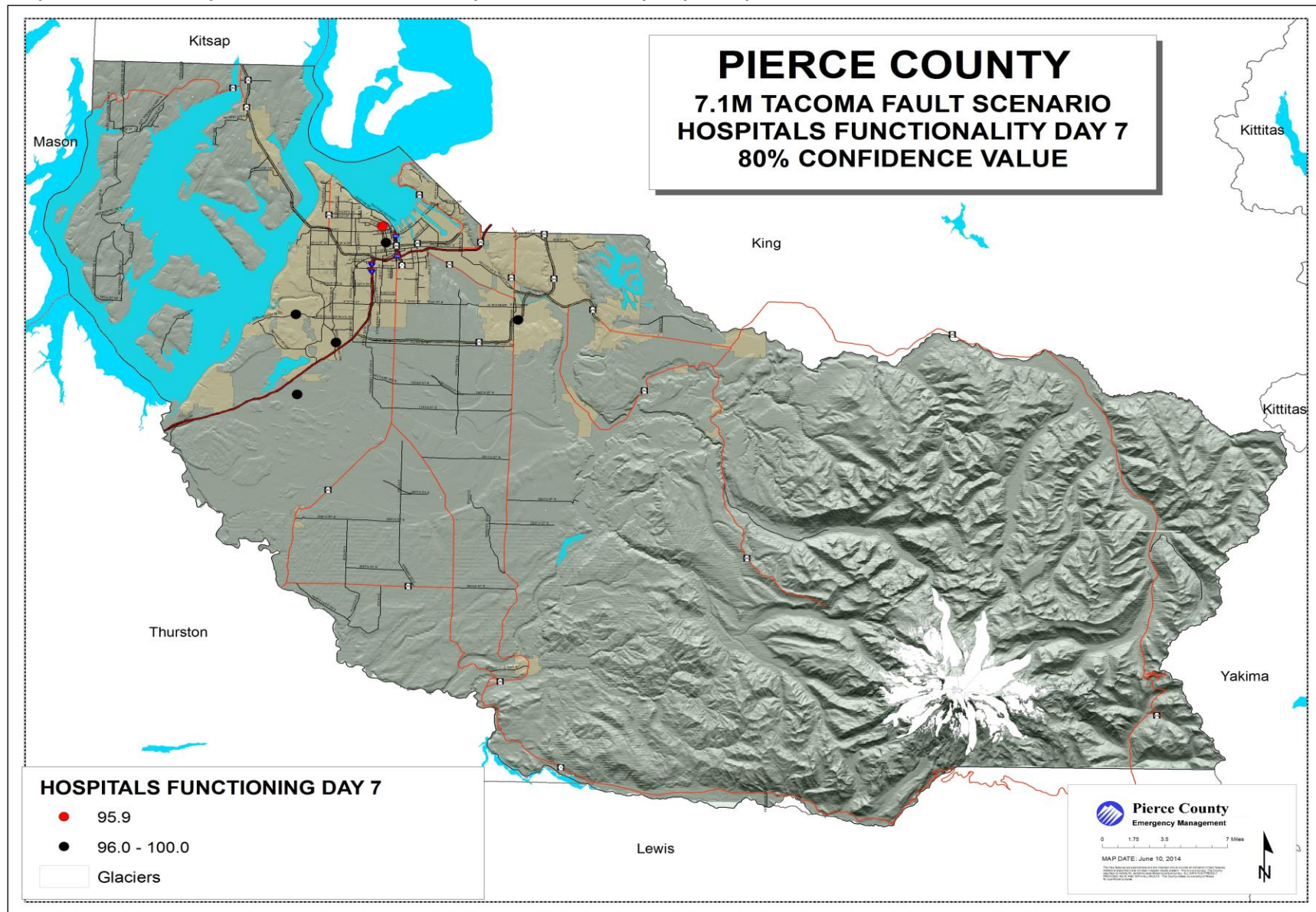
Map F-5 Pierce County Tacoma Fault Scenario Police Department Functionality Day 7 Map²



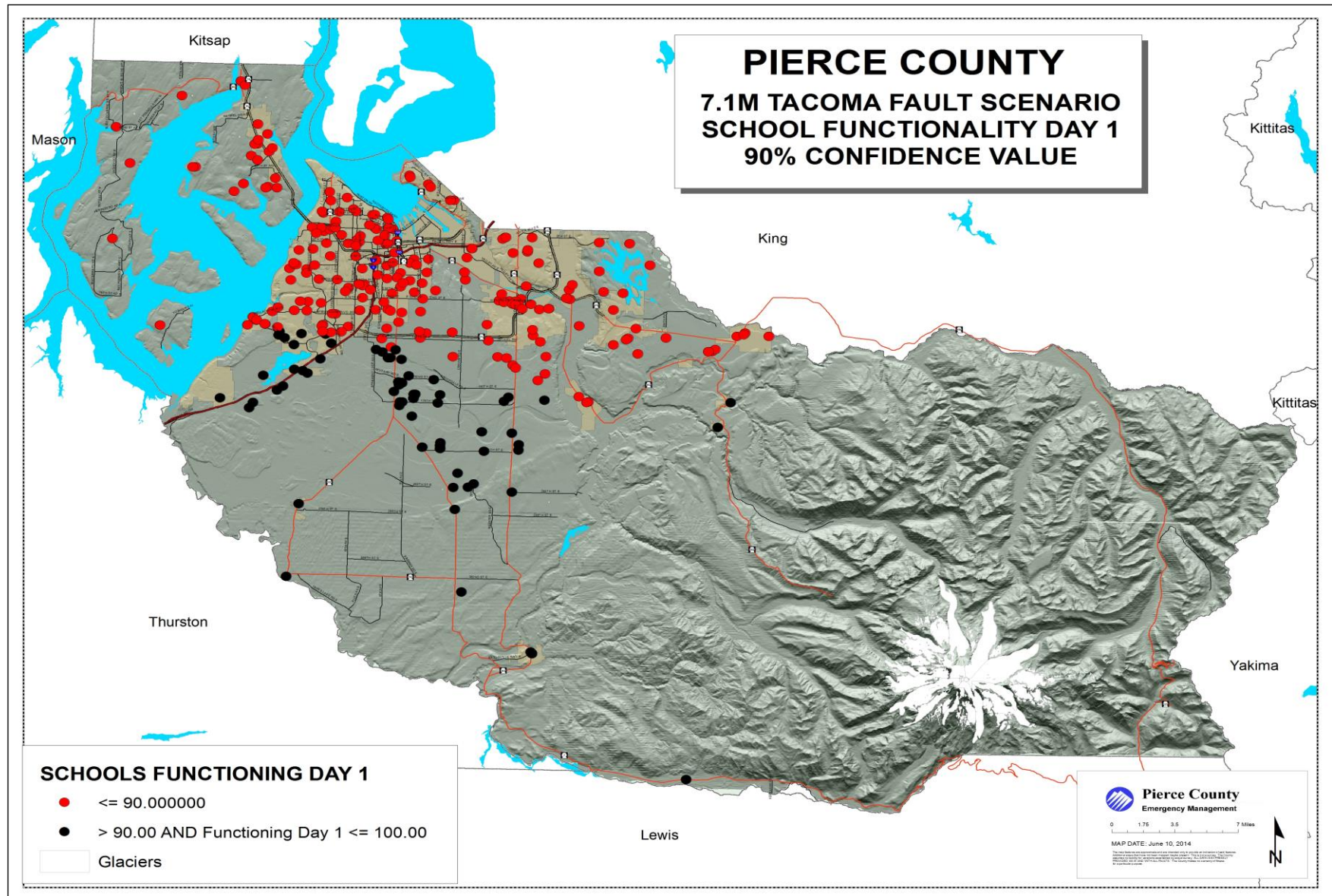
Map F-6 Pierce County Tacoma Fault Scenario Hospitals Functionality Day 1 Map³



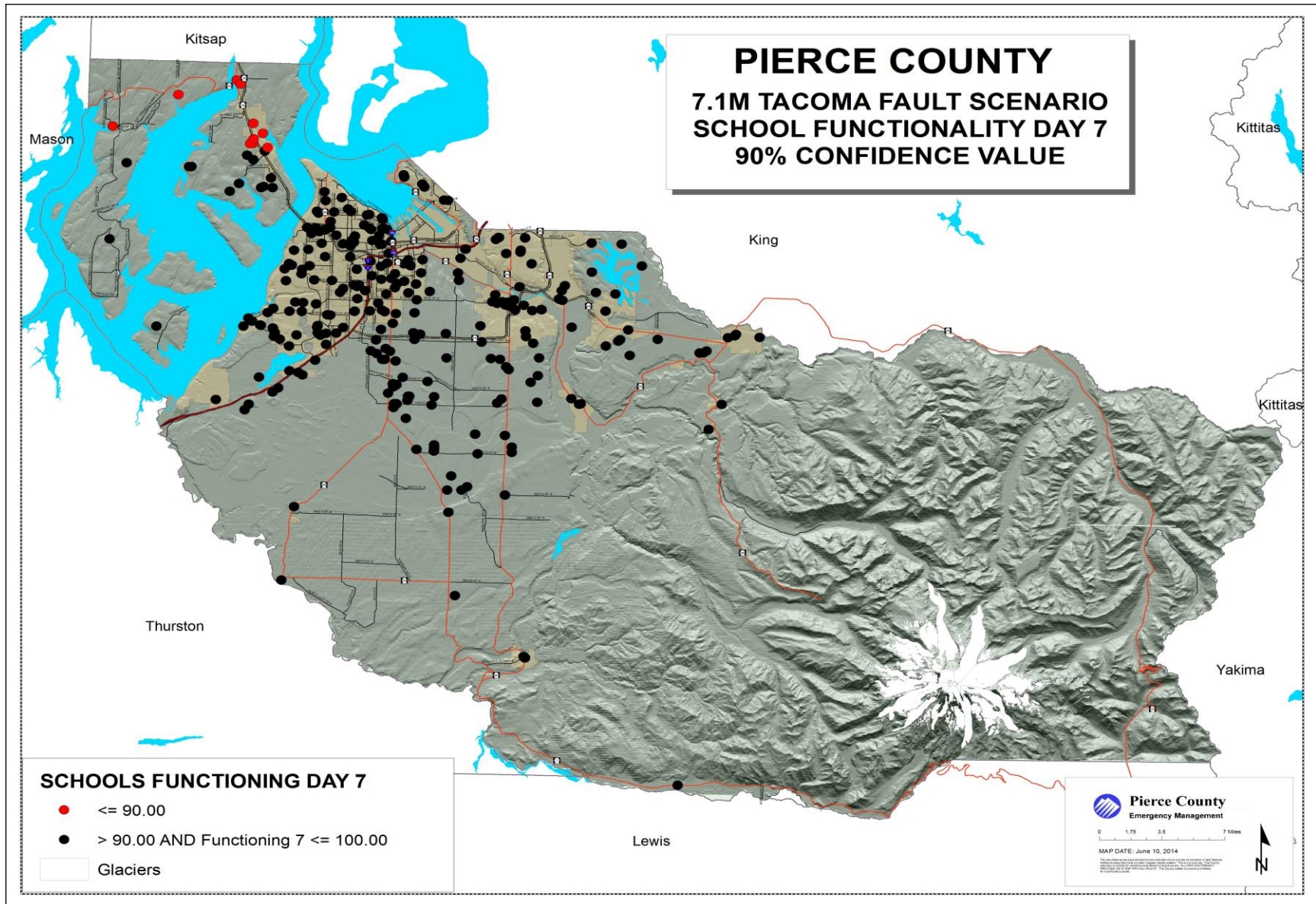
Map F-7 Pierce County Tacoma Fault Scenario Hospitals Functionality Day 7 Map⁴



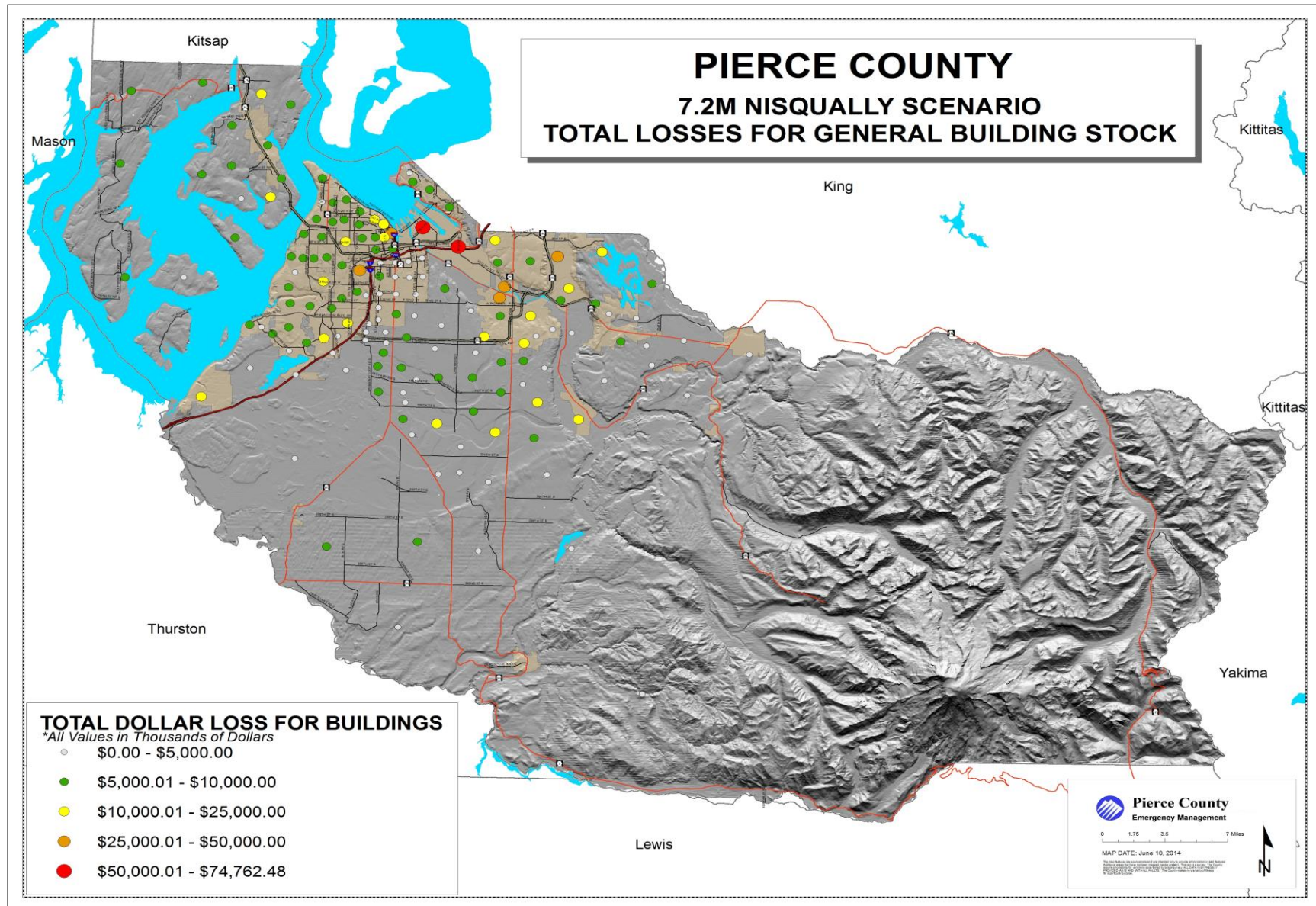
Map F-8 Pierce County Tacoma Fault Scenario School Functionality Day 1 Map



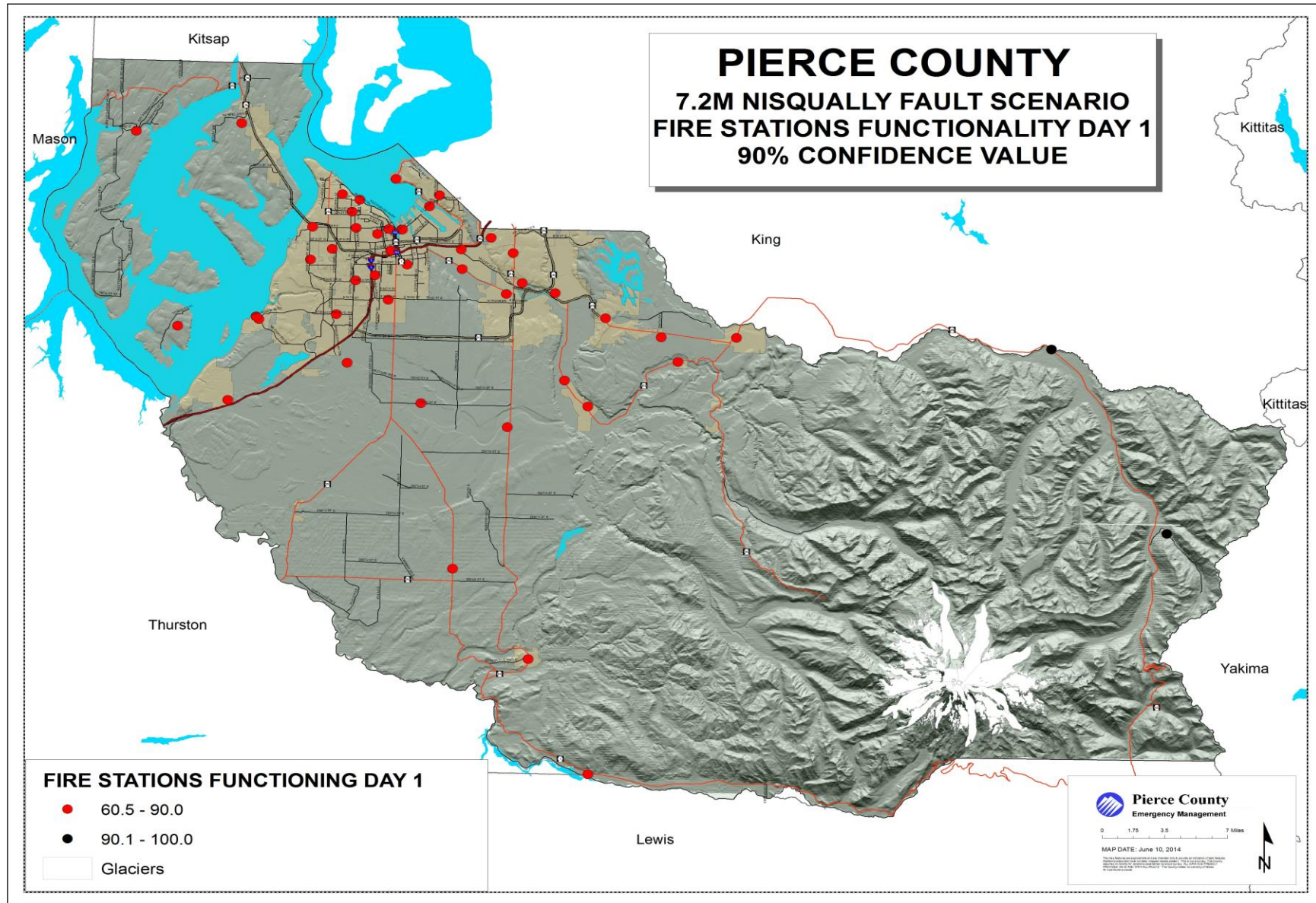
Map F-9 Pierce County Tacoma Fault Scenario School Functionality Day 7 Map



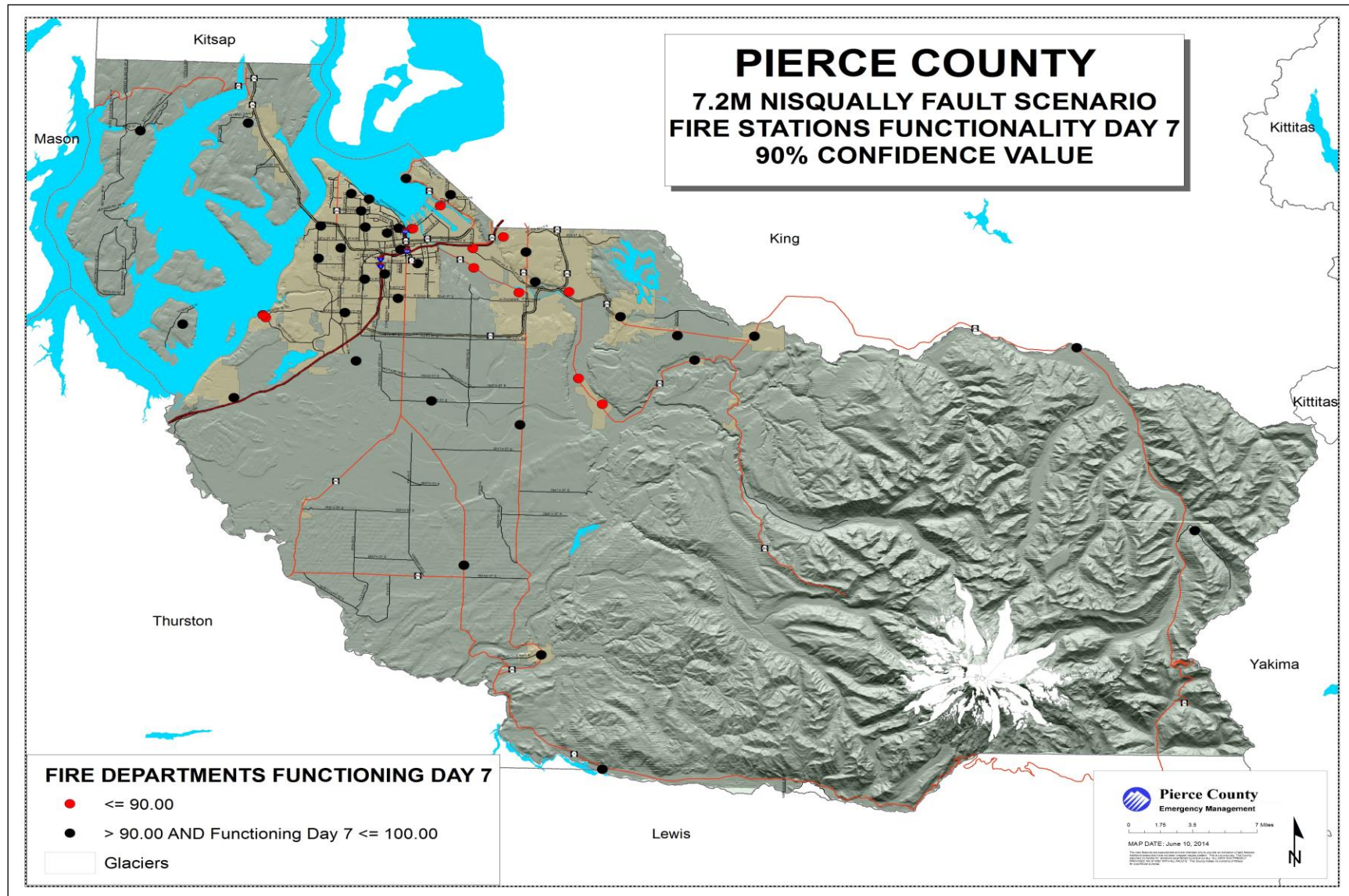
Map F-10 Pierce County Nisqually Fault Scenario Total Losses Map



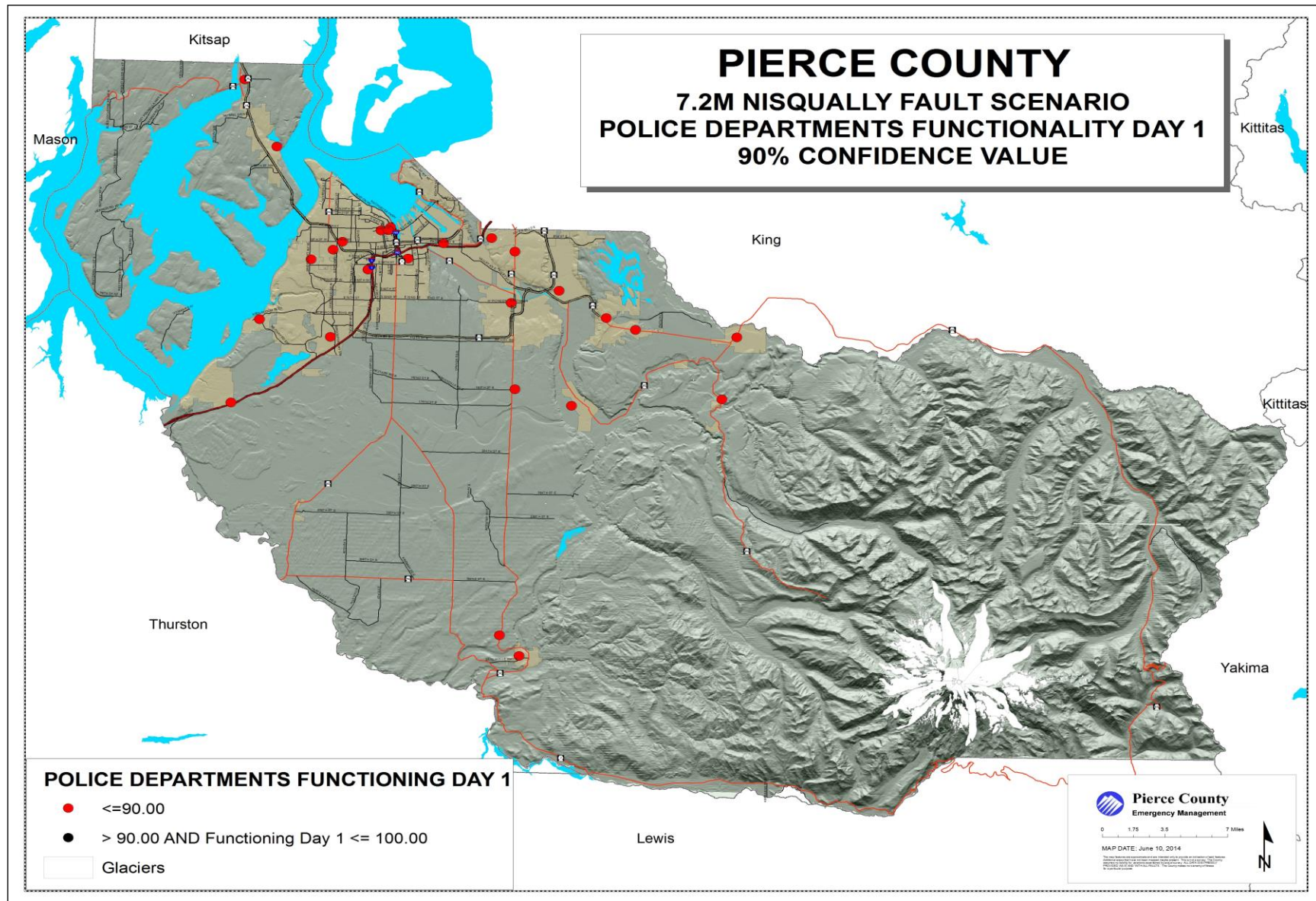
Map F-11 Pierce County Nisqually Fault Scenario Fire Stations Functionality Day 1 Map



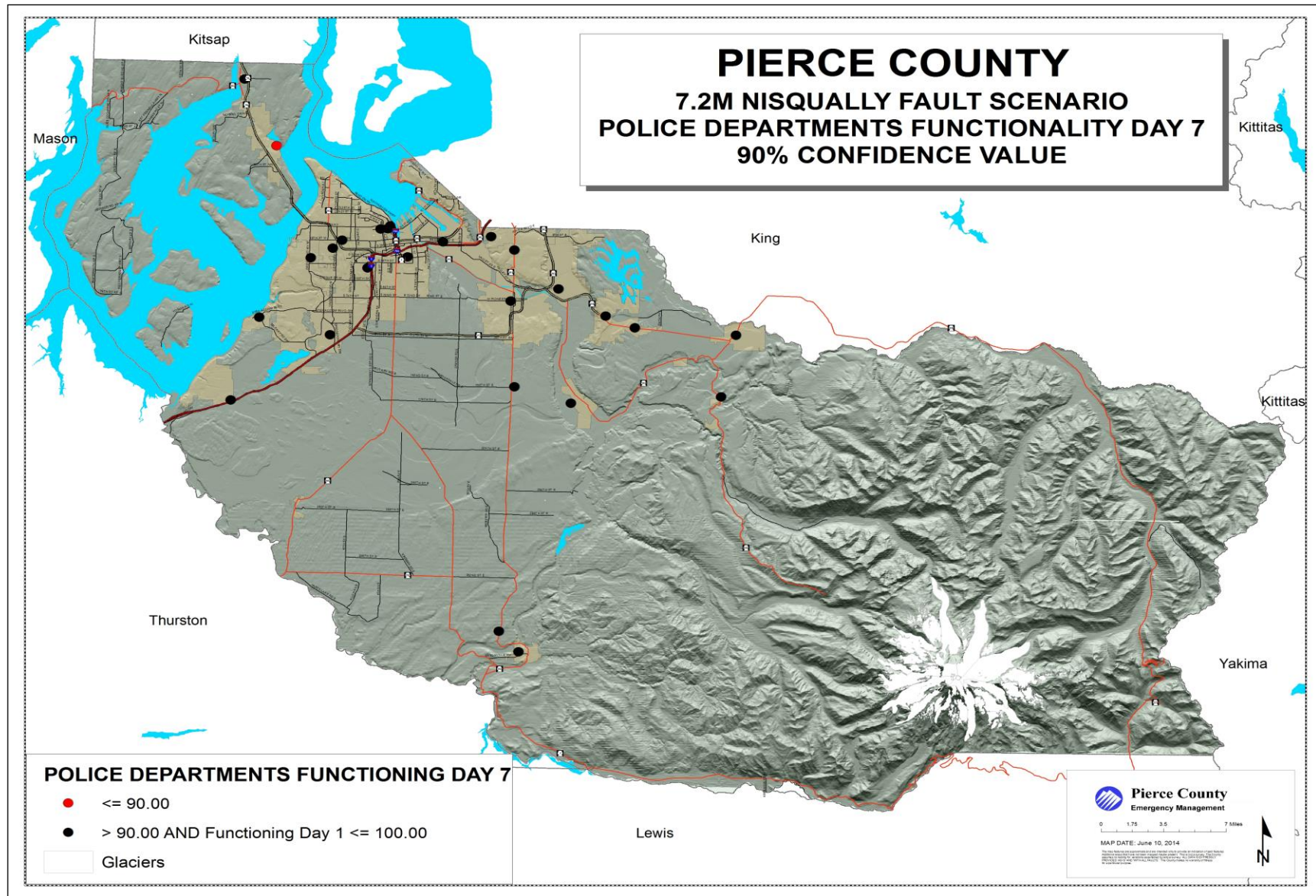
Map F-12 Pierce County Nisqually Fault Scenario Fire Stations Functionality Day 7 Map



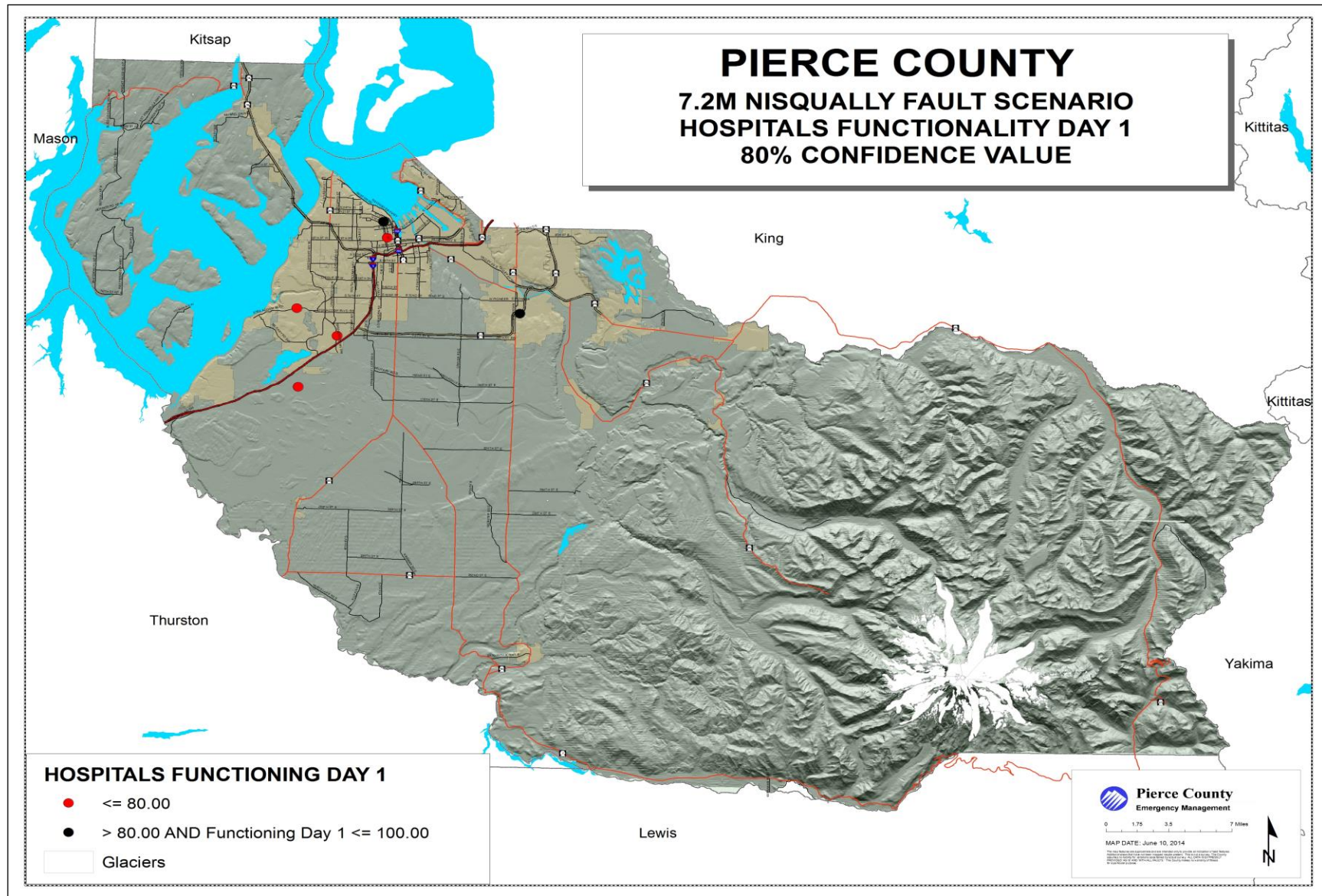
Map F-13 Pierce County Nisqually Fault Scenario Police Departments Functionality Day 1 Map⁵



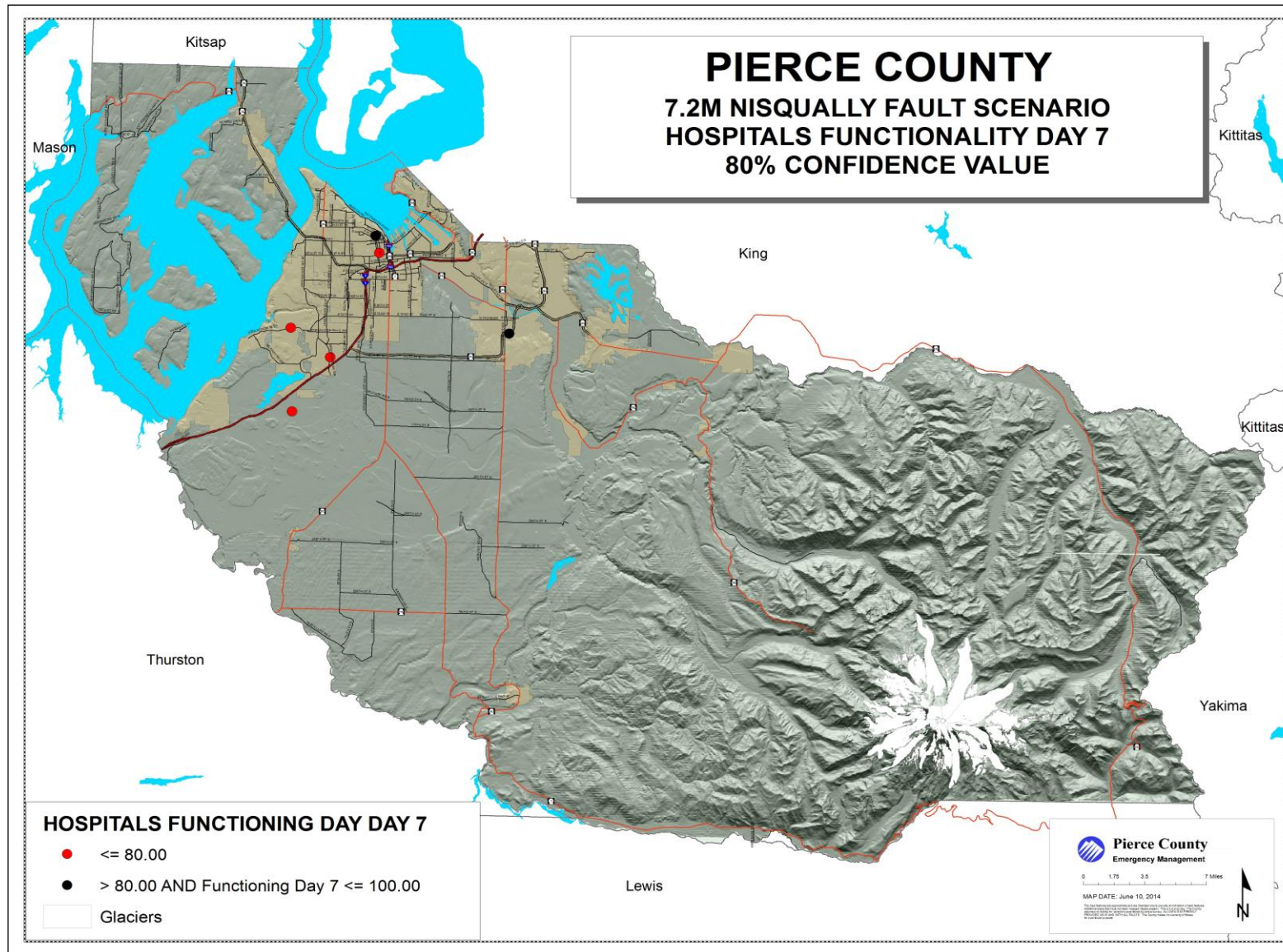
Map F-14 Pierce County Nisqually Fault Scenario Police Departments Functionality Day 7 Map⁶



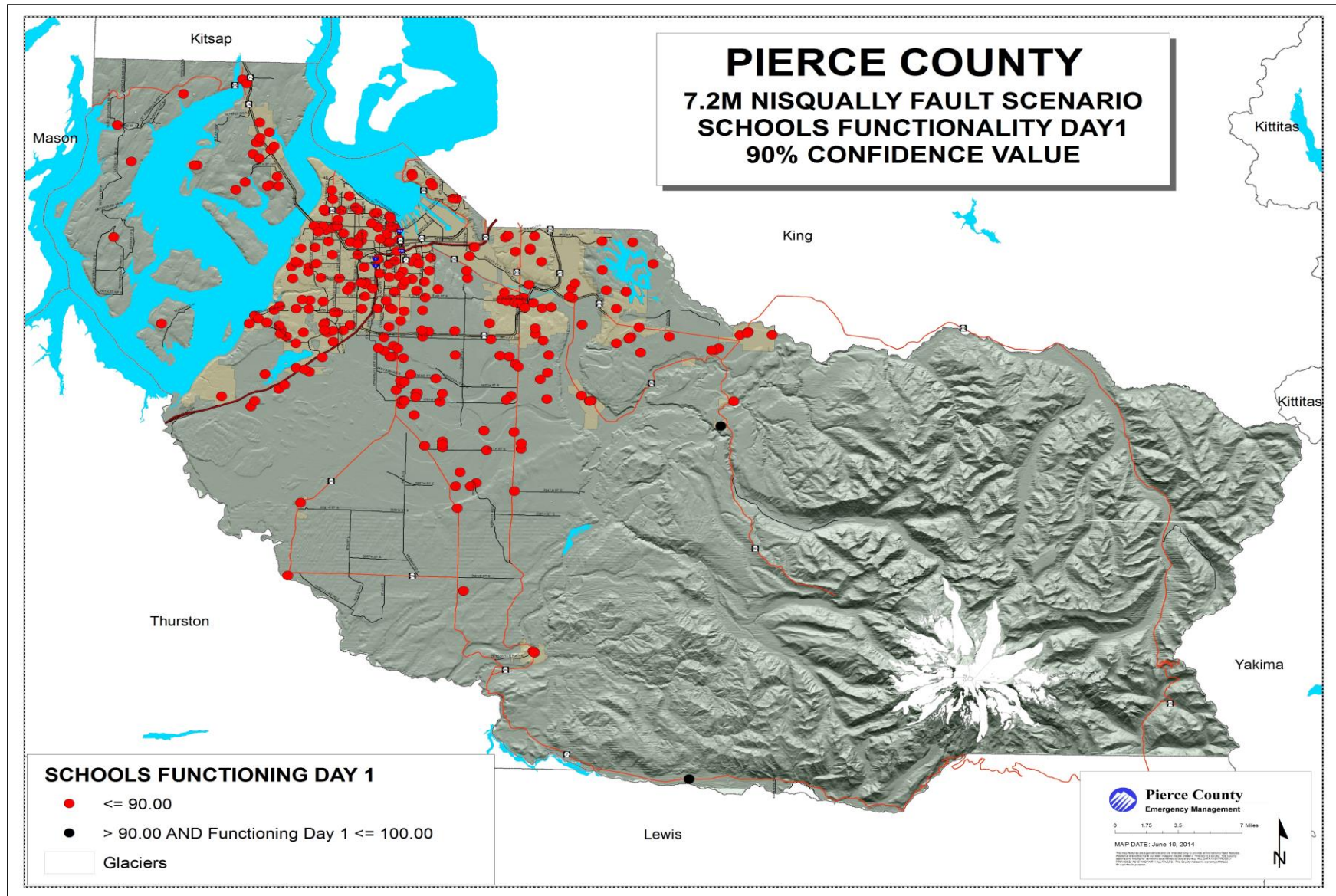
Map F-15 Pierce County Nisqually Fault Scenario Hospital Functionality Day 1 Map⁷



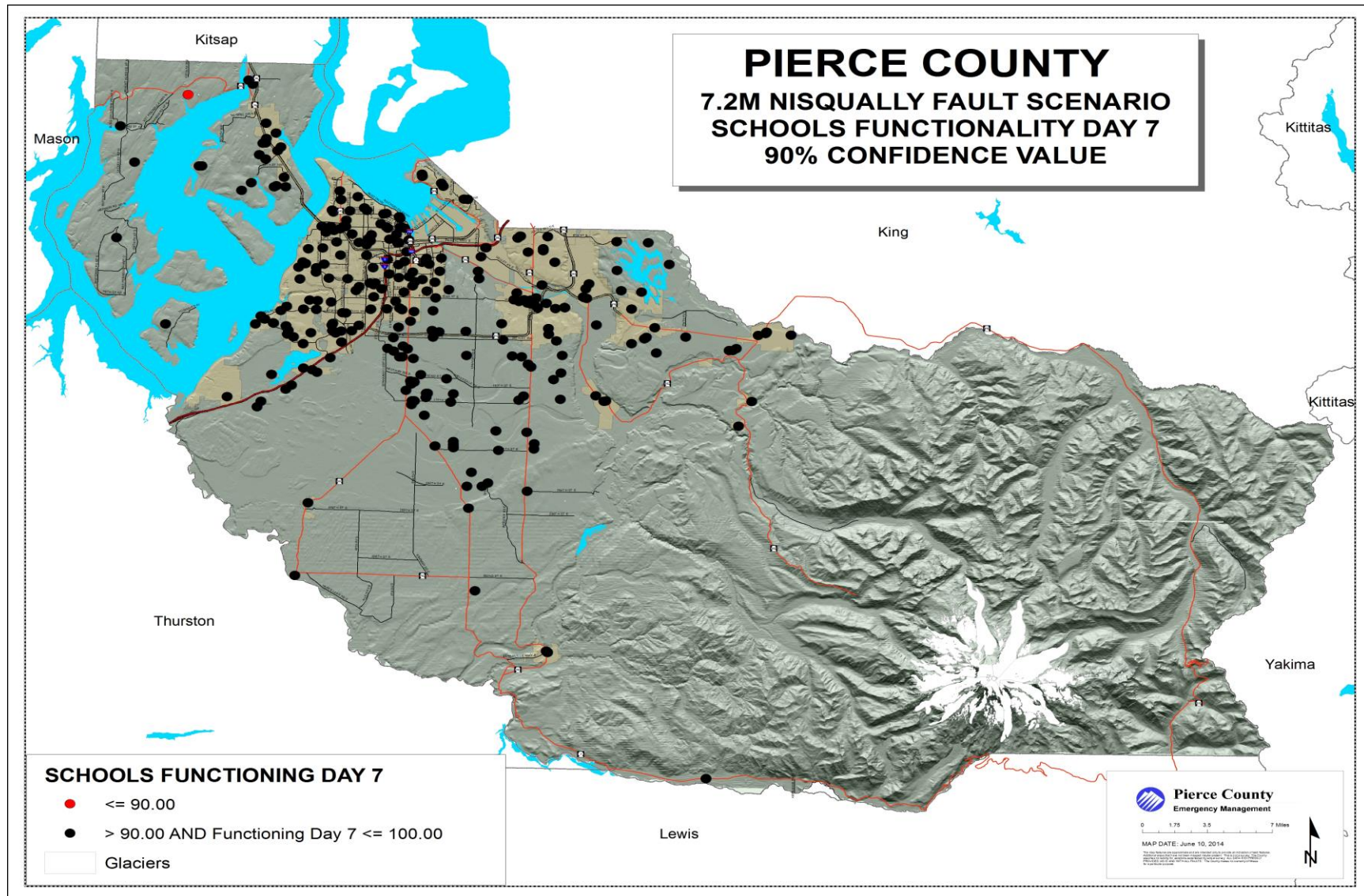
Map F-16 Pierce County Nisqually Fault Scenario Hospital Functionality Day 7 Map⁸



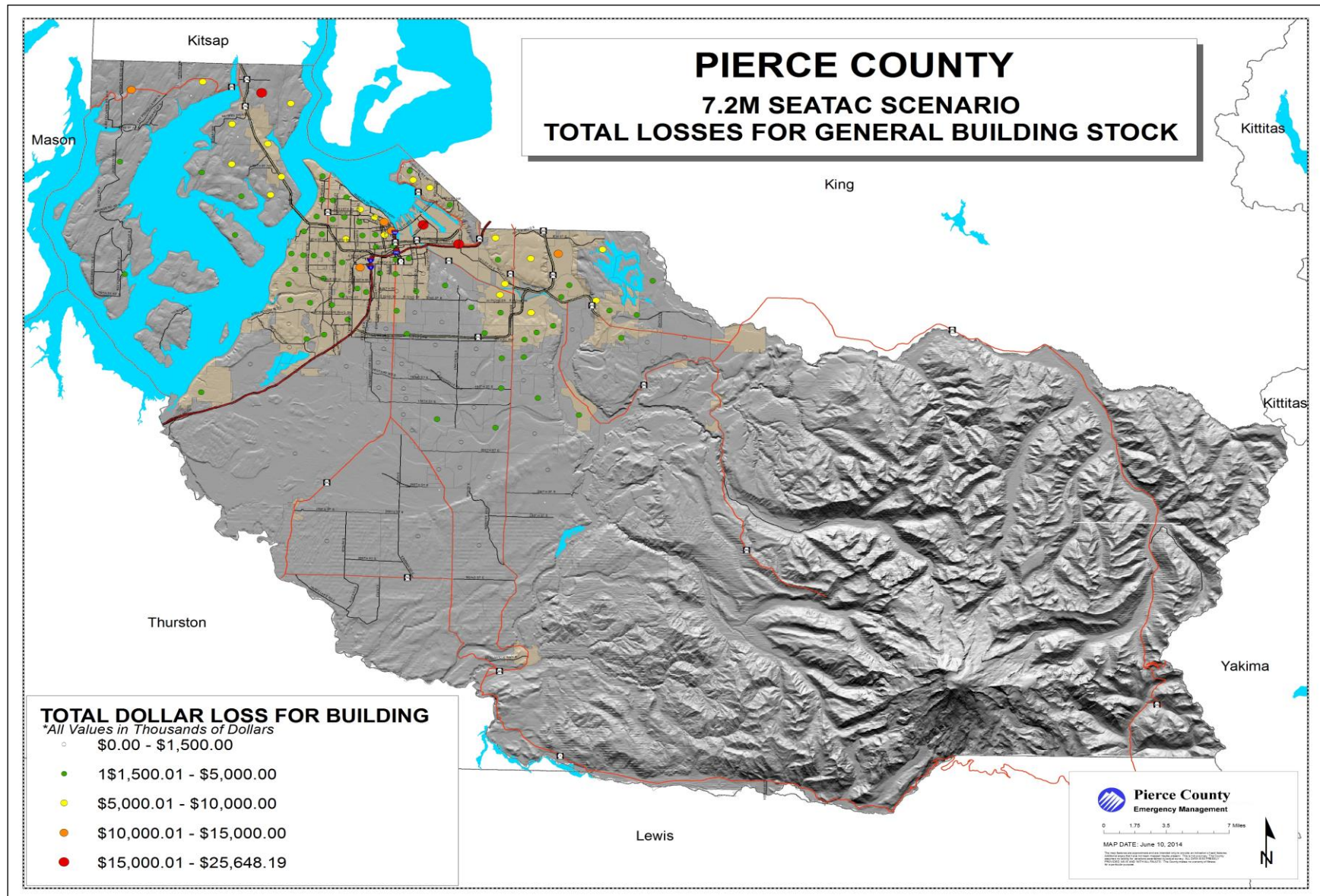
Map F-17 Pierce County Nisqually Fault Scenario Schools Functionality Day 1 Map



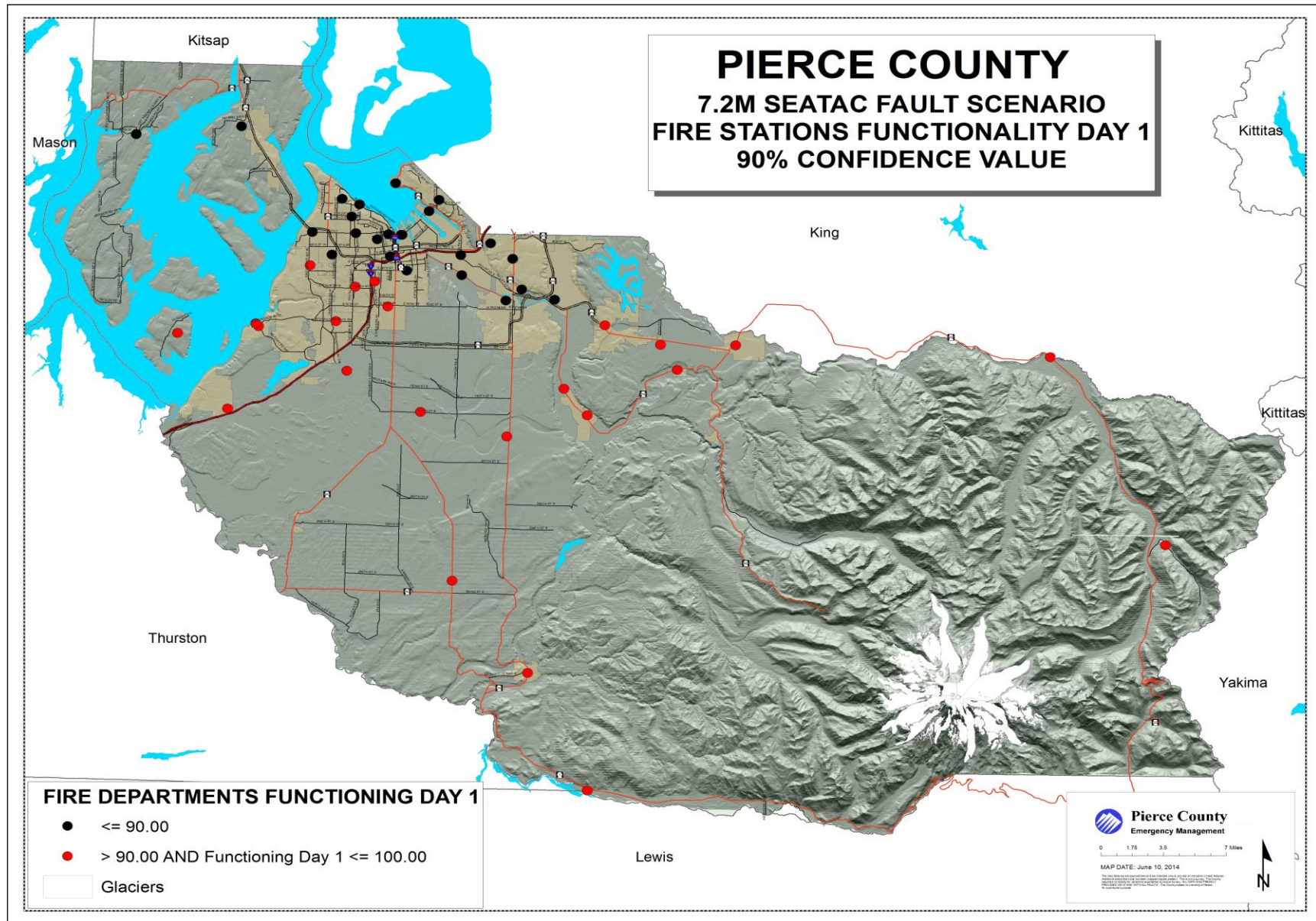
Map F-18 Pierce County Nisqually Fault Scenario Schools Functionality Day 7 Map



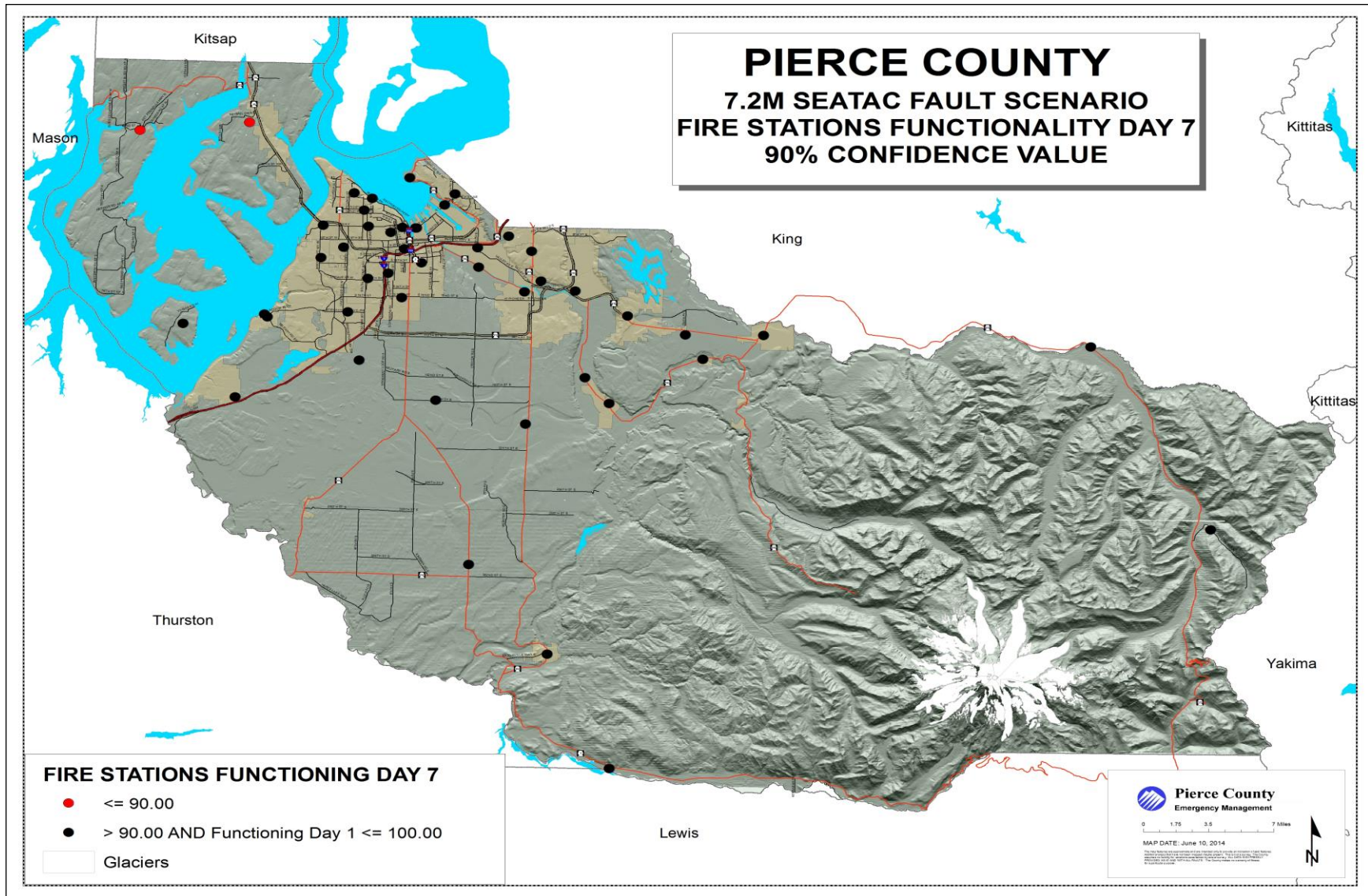
Map F-19 Pierce County SEATAC Fault Scenario Total Losses Map



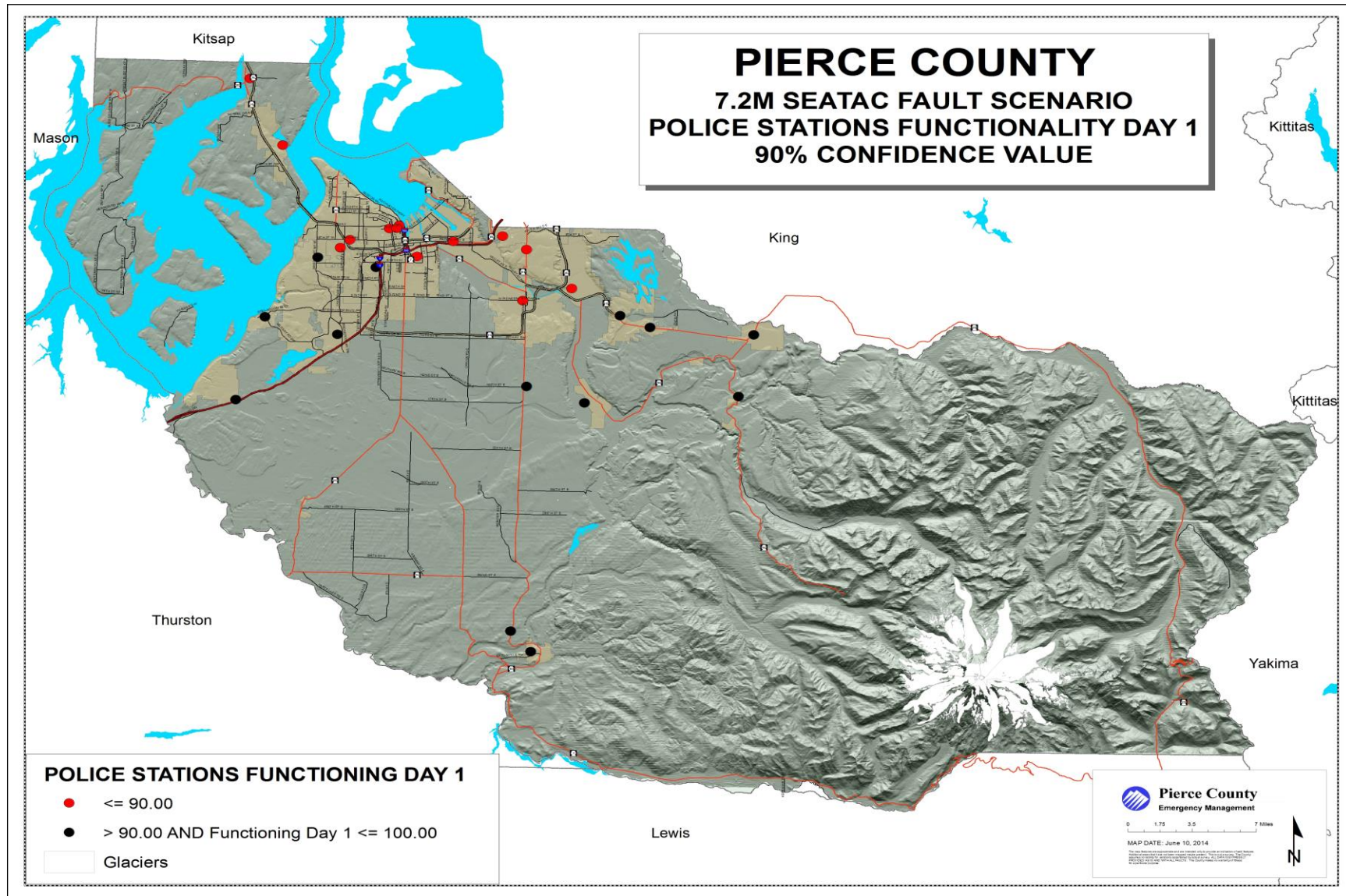
Map F-20 Pierce County SEATAC Fault Scenario Fire Stations Functionality Day 1 Map



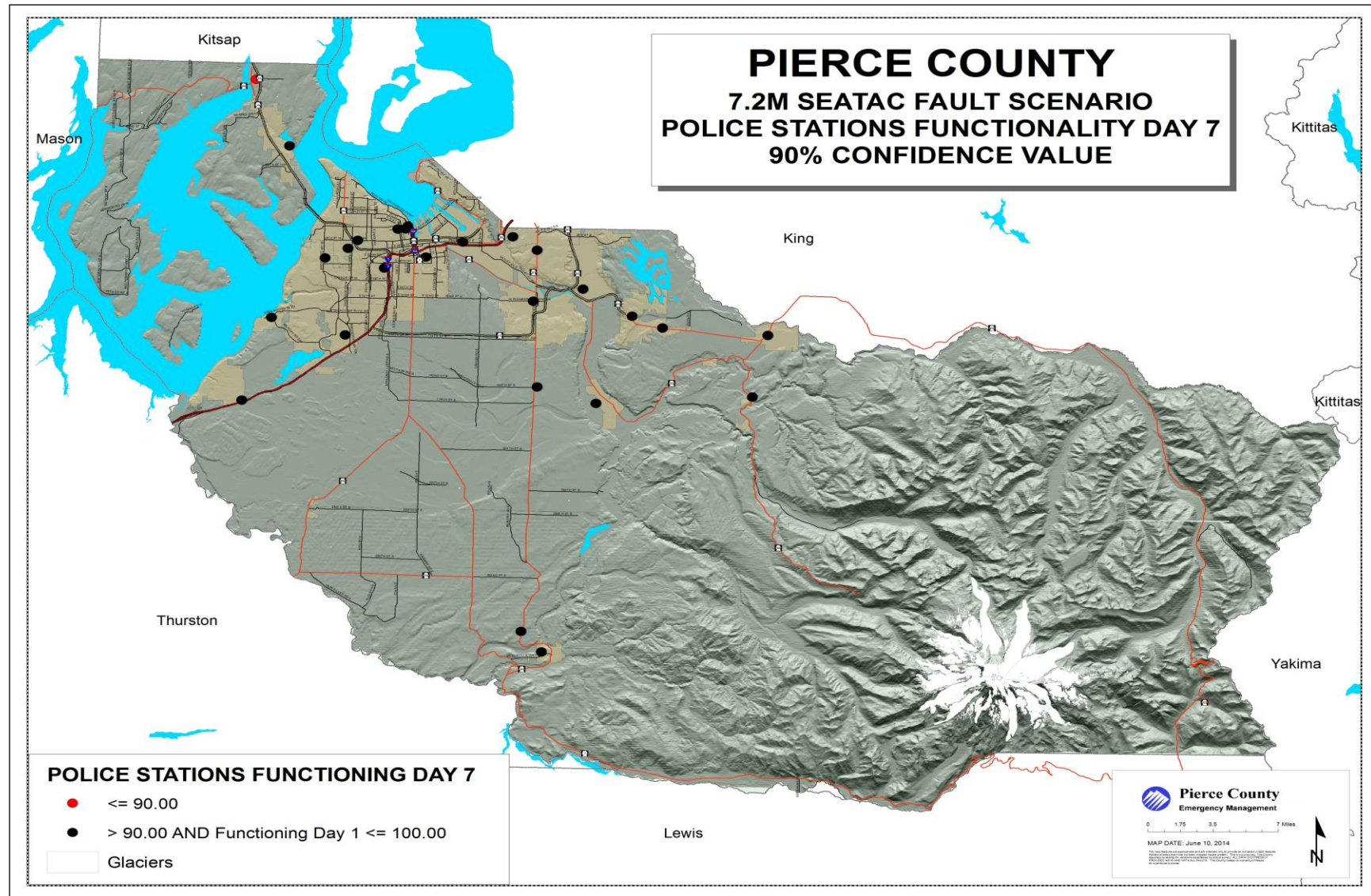
Map F-21 Pierce County SEATAC Fault Scenario Fire Stations Functionality Day 7 Map



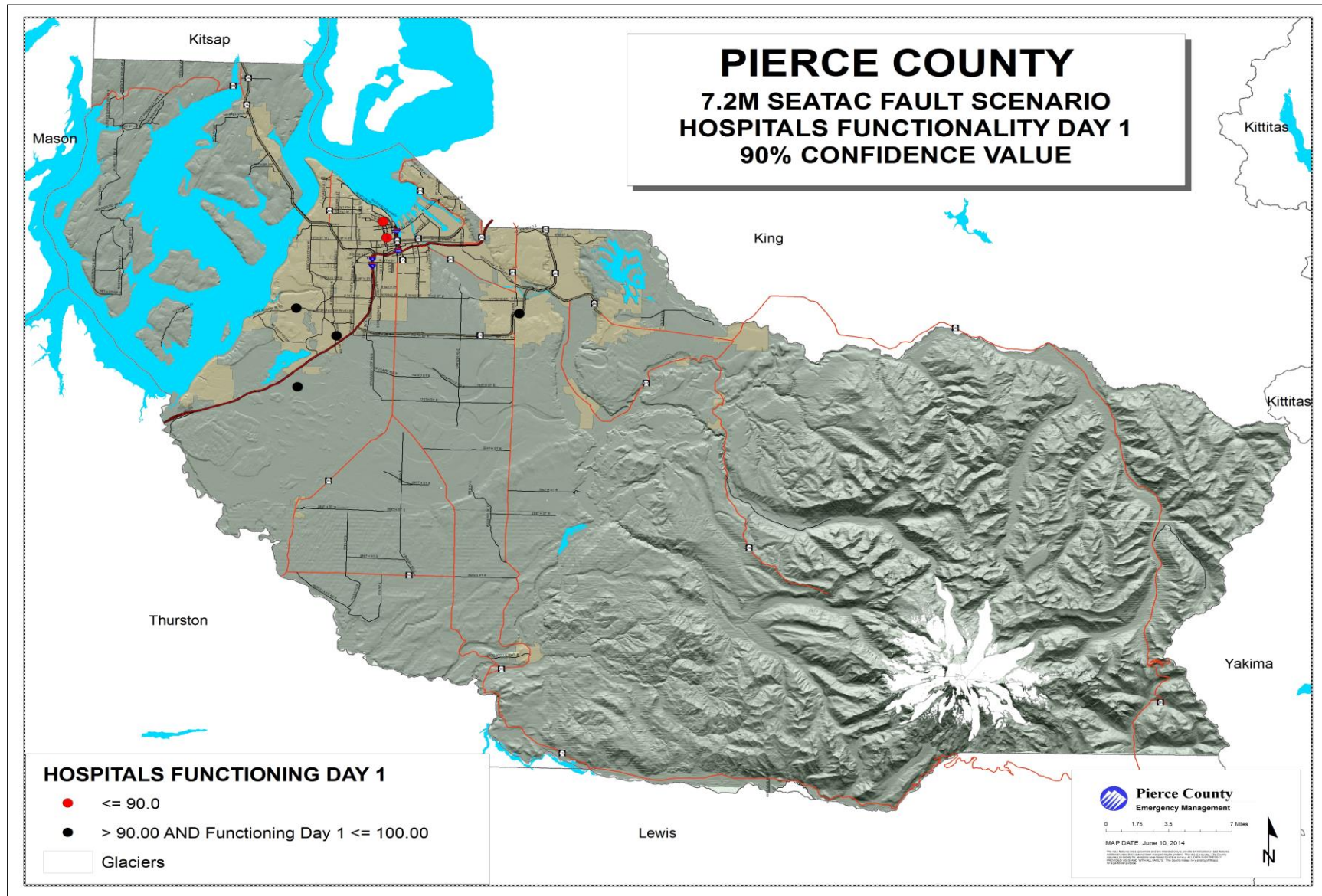
Map F-22 Pierce County SEATAC Fault Scenario Police Department Functionality Day 1 Map⁹



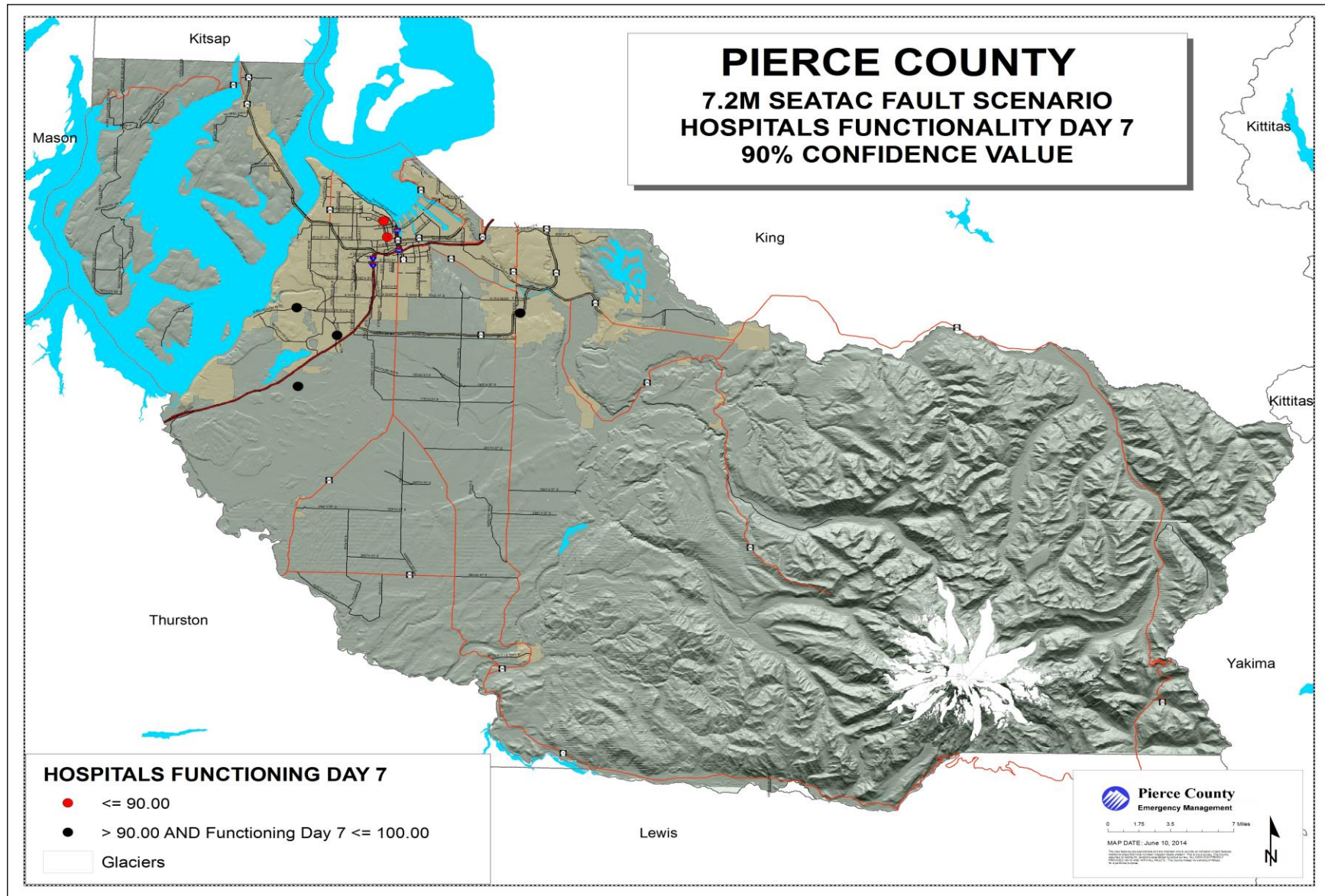
Map F-23 Pierce County SEATAC Fault Scenario Police Department Functionality Day 7 Map¹⁰



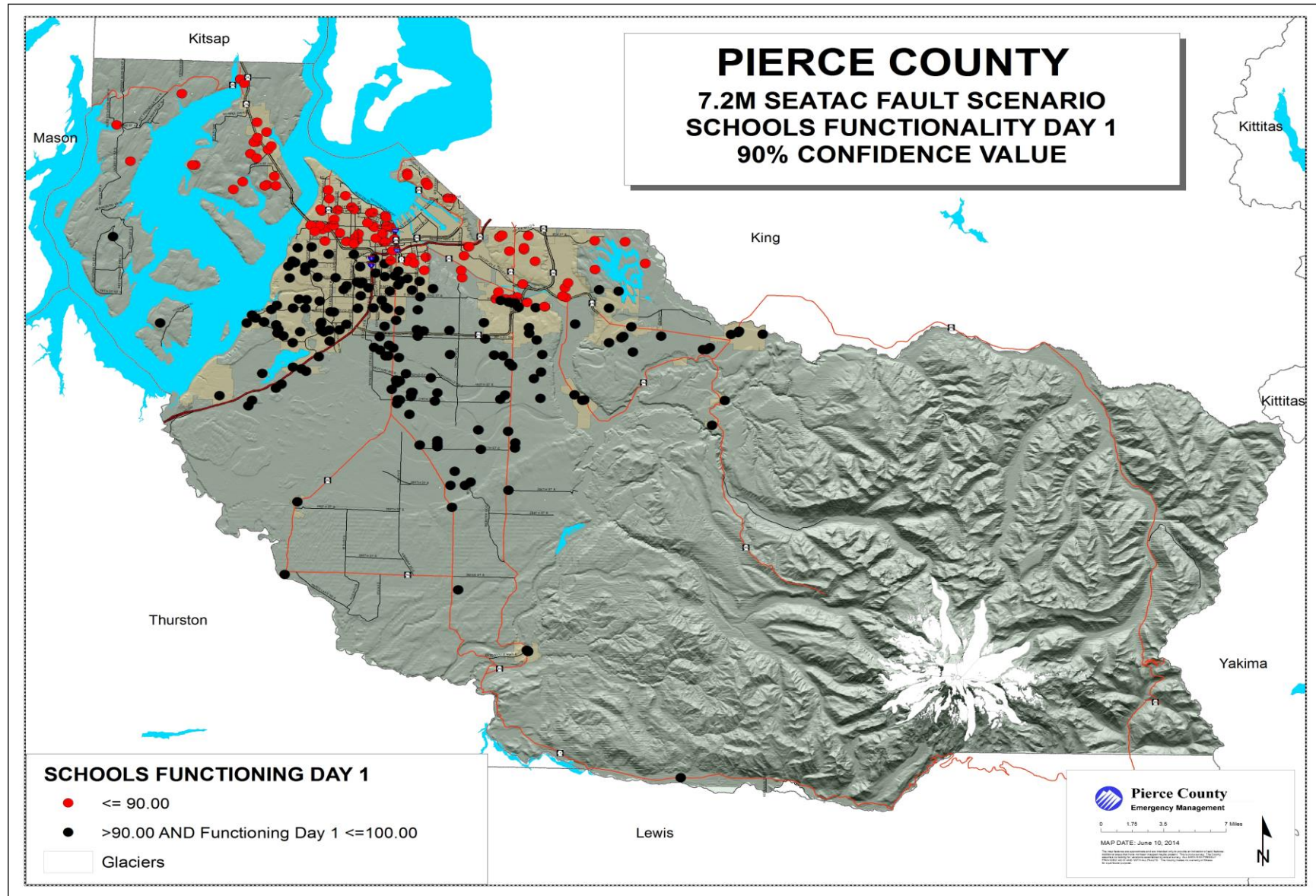
Map F-24 Pierce County SEATAC Fault Scenario Hospital Functionality Day 1 Map¹¹



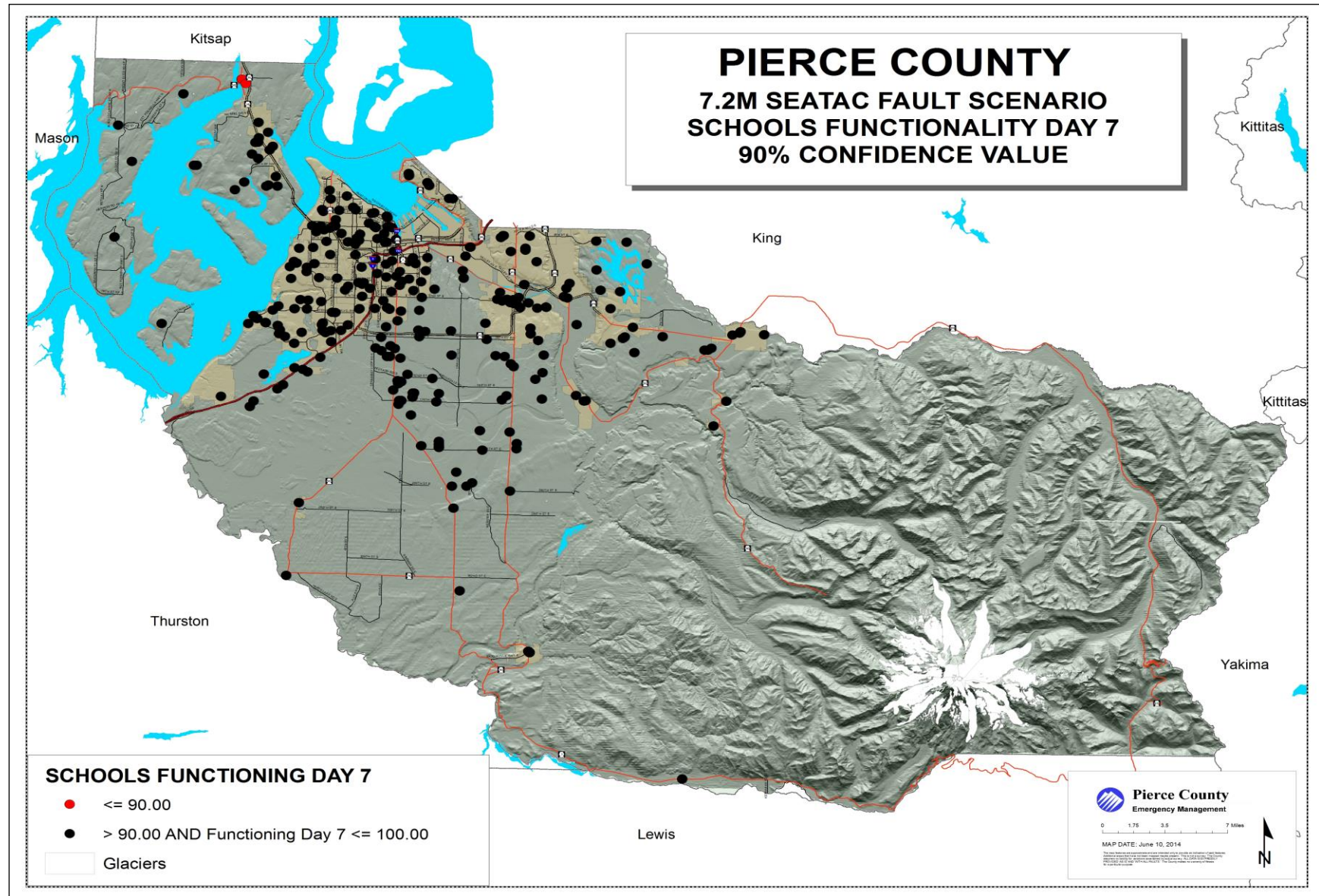
Map F-25 Pierce County SEATAC Fault Scenario Hospital Functionality Day 7 Map¹²



Map F-26 Pierce County SEATAC Fault Scenario Schools Functionality Day 1 Map



Map F-27 Pierce County SEATAC Fault Scenario Schools Functionality Day 7 Map



Endnotes

¹ Hazus has placed the police station location incorrectly for the City of Orting. It should be located in the middle of the city with Fire District #18 as they share the same building.

² Hazus has placed the police station location incorrectly for the City of Orting. It should be located in the middle of the city with Fire District #18 as they share the same building.

³ St. Anthony's Hospital is not included on the map due to the recent construction of the hospital lack of data at the time the analysis was done.

⁴ St. Anthony's Hospital is not included on the map due to the recent construction of the hospital lack of data at the time the analysis was done.

⁵ Hazus has placed the police station location incorrectly for the City of Orting. It should be located in the middle of the city with Fire District #18 as they share the same building.

⁶ Hazus has placed the police station location incorrectly for the City of Orting. It should be located in the middle of the city with Fire District #18 as they share the same building.

⁷ St. Anthony's Hospital is not included on the map due to the recent construction of the hospital lack of data at the time the analysis was done.

⁸ St. Anthony's Hospital is not included on the map due to the recent construction of the hospital lack of data at the time the analysis was done.

⁹ Hazus has placed the police station location incorrectly for the City of Orting. It should be located in the middle of the city with Fire District #18 as they share the same building.

¹⁰ Hazus has placed the police station location incorrectly for the City of Orting. It should be located in the middle of the city with Fire District #18 as they share the same building.

¹¹ St. Anthony's Hospital is not included on the map due to the recent construction of the hospital lack of data at the time the analysis was done.

¹² St. Anthony's Hospital is not included on the map due to the recent construction of the hospital lack of data at the time the analysis was done.